



# CHAMPION BUILDING MATERIALS CO., LTD.

Stock Code : 1806

2025 INVESTOR CONFERENCE

December 22 , 2025



# Disclaimer

The forward-looking statements contained in this presentation are subject to risks and uncertainties and actual results may differ materially from those expressed or implied in these forward-looking statements.

Champion Building Materials Co., Ltd. makes no representation or warranty as to the accuracy or completeness of these forward-looking statements and nor does Champion Building Materials Co., Ltd. undertake any obligation to update any forward-

looking statements, whether as a result of new information or future events.

This presentation and its contents may not be accessed by any third party without the written permission of the Company.



# Company Profile



**Established Year : 1972    Year of Listing : 1992**

**CEO : Mr. Peter Lin (Lin, Jung-Te)**

**Capital : TWD 3.904 Billion**

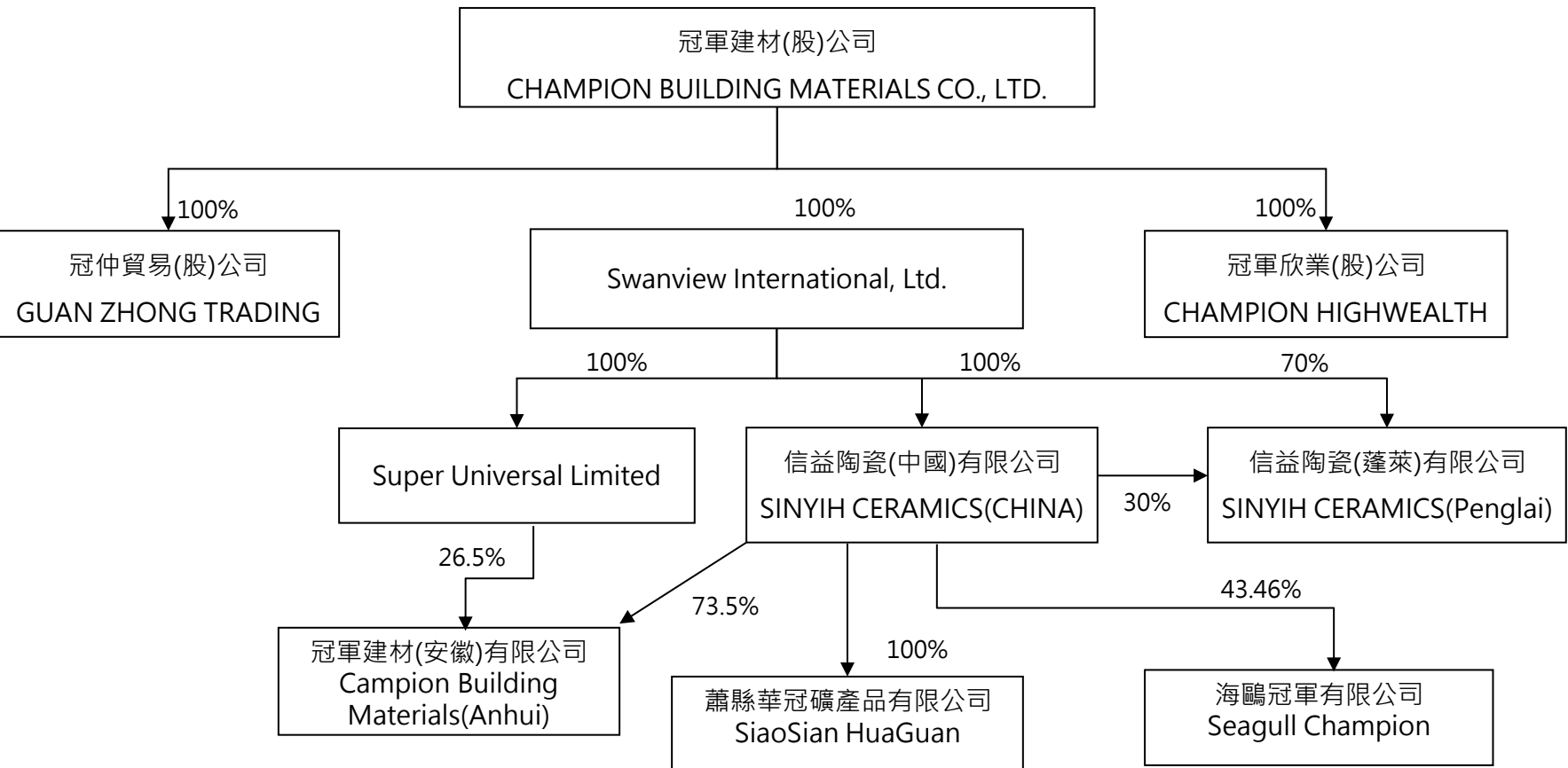
**Group Employees : 768**

**Main Products-2025Q1~Q3 Proportion (Taiwan Market) : Tile 2.333 billion(91.22%)-Building External Tile 16% 、 Traditional Floor Tile 0.46% 、 Glazed Porcelain Tile 55% 、 Polished Porcelain Tile 21% ; SPC Flooring 0.221 billion (8.64%)**







Factories	TAIWAN	CHINA	
	Miaoli factory	Penglai factory	Anhui factory
Capacity	7 production lines, annual capacity 12,750,000 m2	All aging equipment has been sold.	3 production lines, annual capacity 6,590,000 m2
Production positioning	Taiwan domestic market (sales brands-Champion and Marcobelli)	The Company is actively seeking investment projects (collaborations).	Champion leased two factory to Seagull champion company (joint venture for China market), for manufacturing products to supply mainland market, selling high-end sanitary ware, new construction porcelain products and porcelain tile .

# • Organization



# • Multi Brands Strategy

Brands	Concept
	<p>Committed to producing tiles of the highest quality, creating genuine value for architecture.</p>
	<p>Drawing inspiration from renowned Italian designers, our products are manufactured in Taiwan to deliver authentic European aesthetics, meeting the expectations of high-end luxury residential clients.</p>
 <p>Impore Tile</p>	<p>Through the concept of “ Living Building Materials,” we offer premium imported Italian tile brands and high-quality wood flooring selections, complemented by professional installation teams, to provide consumers with comprehensive and diversified building material solutions.</p>
 <p>Premium Looing</p>	

# • Our Advantage (1-1)

## Exquisite tile the name of 「CHAMPION」, One of the top 100 brands in Taiwan :

Champion Building Material in Taiwan obtain first brand for more than 25 consecutive years, and market share about 32% in the Taiwan. Our group focus on product R&D, Green of environment protection, advanced production process and service...Etc, for these Objective factors Champion is a pioneer in tiles industry.



- ✓ Market share No.1: The largest brand in Taiwan, market share No.1 .
- ✓ Products range No.1: The tiles king of production polished porcelain with the biggest size 120x120cm and glazed porcelain, 2cm thickness product with exclusive technology .
- ✓ Quality No.1: the first tiles manufacturer obtain ISO-9001, ISO-14001 Certification for Quality control and environment protect.
- ✓ Green No.1: No. 1 in the industry for environmental protection investment.
- ✓ The first one obtain Recycle certificated and Nano mark certificated.
- ✓ Nationwide the first obtain Green building material Certificate for Tiles factory .
- ✓ Nationally won for many consecutive years of Taiwan Excellent award .
- ✓ Nationwide the first obtain Green Factory Certificate for Tiles industry .

# • Our Advantage (1-2)

## Multi-brand strategy · Home decoration style leader :

The group owns the tile industry of MIT 「 **CHAMPION** 」 , Natural European style 「 **MARCOBELLI** 」 , And exquisitely European fashion aesthetics 「 **MARVELOUS LIVING** 」 brands, each brands of products with their own style, Market positioning, to fulfill developer and designer's require and Champion regularly runs with designers and tiler, Share new materials information through seminars, new techniques, create a high-quality home environment.

## The most advanced production equipment with technology upgrading · our goal is becoming a pioneer in the field of tile technology :

Focus on production base, Continue to increase the proportion of automated production and equipment upgrades, Introduce into various Italian equipment like digital printer , Enrich of tile texture with and enhance product value and competitiveness.



# • Innovation of Products

## ◎ Tiles Digital Printing Technology

The first to introduce into the latest European high-tech digital printing technology, Leading a new revolution in tile decoration techniques, Fully show the texture of marble and stone.

## ◎ Tiles Anti-Slip NANO Technology

Nano technology with anti-slip tiles · obtained 2020 MIT golden selection award, two features for anti-slip and easily clean can reduce injured risk of falling for elder , children and pets.

## ◎ Tiles of 2cm thickness(exclusive Technology)

Innovative process with new technical increase the tile thinness to 2cm. And also with fine texture and natural veins same as nature stone, low water absorption, Anti-Slip, wear-resisting, stain resistance, easy clean and simple installation way...etc, all advantages are better than natural stone.

## ◎ The Exclusive 90X180 Porcelain Slab

Largest MASTER ART artistic mid-sized tiles available in domestic tiles. The slabs with natural stone patterns allow use in small residences for decorations with less seams and generous appearance.



# • Our Advantage(1-3)

## Strong Market Coverage & Omni-Channel Support

Champion Group has over 200 branded dealers across Taiwan, providing strong market coverage. We offer a 15-year product warranty, five-star showroom services, and an integrated sales-support app. Digital tools such as E-catalogs and real project photos are provided through our cloud platform at no cost.

## Energy Saving & Environmental Responsibility

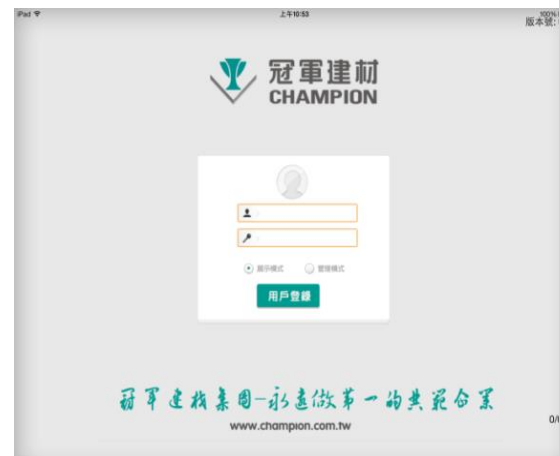
Champion is committed to sustainable production through

- Thermal energy recovery kilns
- Water recycling and reuse
- Power system optimization
- Trim Raw material recycling

Each year, Champion plants 18,600 trees, equivalent to three Da'an Forest Parks, and saves water equal to 1,500 standard swimming pools annually.



15-year warranty



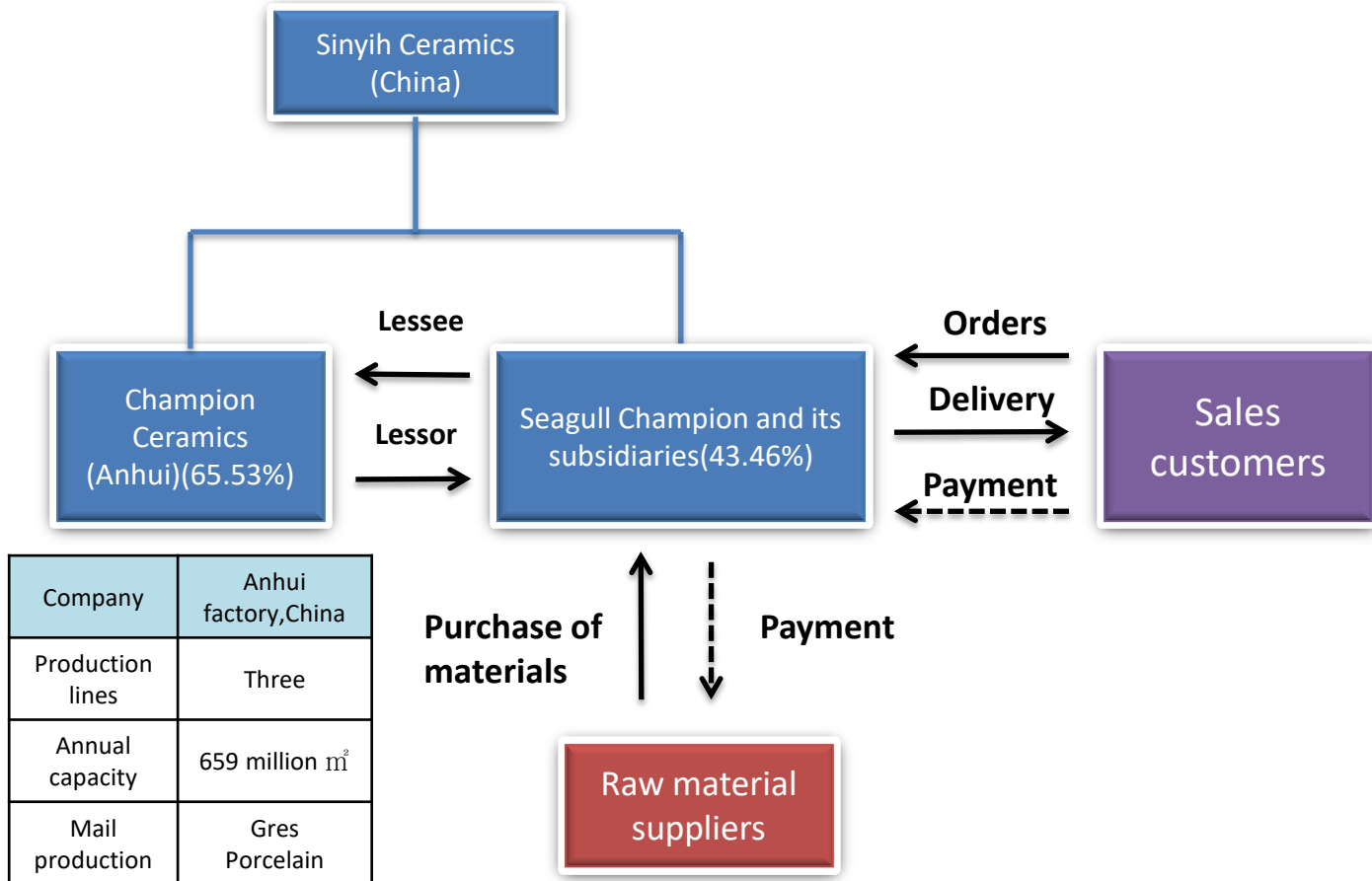
Assistant sales App

# • Operation Model of Taiwan

**Champion building material group** has the largest distribution network with over **200** selling dealer in Taiwan via Champion branding dealers can prompt expanding tile Products market share of Taiwan market , and our selling network are separated by regionals and brands , Champion has totally **12** own regional distributor from north and middle 、 south and east of Taiwan can offer fully service network for all customers 。



# • Operation in China



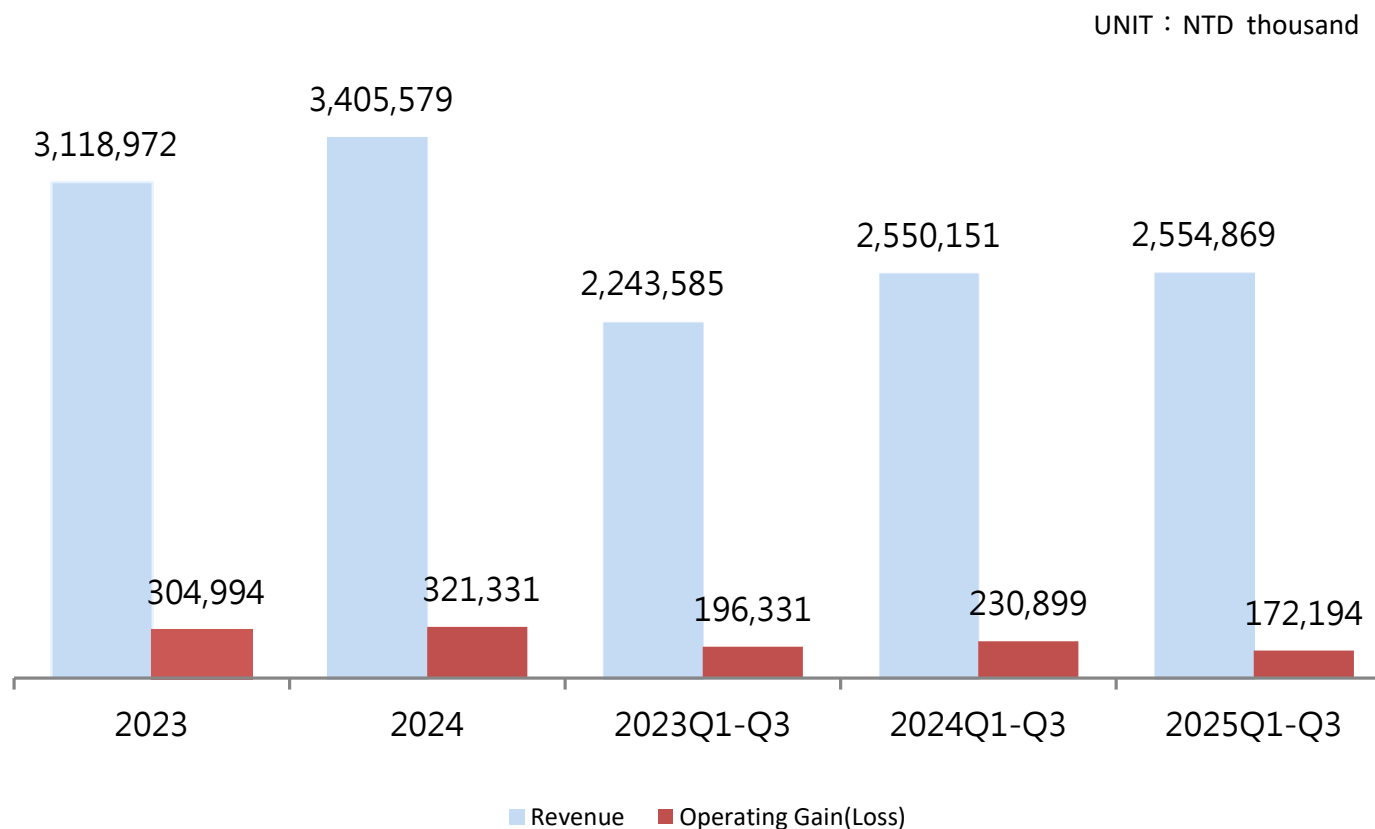
Since April 13, 2020, by cooperating with Guangzhou Seagull Housing Industry Co., Ltd. to invest, Seagull Champion will expand the mainland domestic market. Through industrial chain integration and creation of new businesses, it will increase sales platform and operating marketing channels to deepen the mainland market.

# Consolidated Financial Data

UNIT : NTD thousand, %

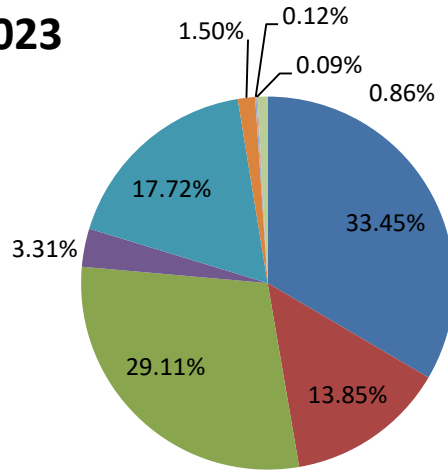
Year	2025Q1~Q3	2024Q1~Q3	YoY	2024	2023
Sales Income	<b>2,558,339</b>	2,570,093	(0.46%)	3,429,476	3,137,657
Operating Costs	<b>1,947,036</b>	1,888,934	3.08%	2,540,467	2,232,348
Operating gross profit	<b>611,303</b>	681,159	(10.26%)	889,009	905,309
Gross Margin	<b>23.89%</b>	26.50%	(9.85%)	25.92%	28.85%
Operating Expenses	<b>487,252</b>	553,735	(12.01%)	675,845	658,823
Net Operating gain	<b>124,051</b>	127,424	(2.65%)	213,164	246,486
Net Income Margin	<b>4.85%</b>	4.96%	(2.22%)	6.22%	7.89%
Net Non-Operating Income	<b>(6,985)</b>	(8,216)	(14.98%)	(33,421)	(184,872)
Tax	<b>28,392</b>	35,263	(19.49%)	60,404	61,205
Net Income	<b>88,674</b>	142,015	(37.56%)	119,339	409
EPS	<b>0.23</b>	0.22	4.55%	0.31	0.001

# • Overview of operations in Taiwan

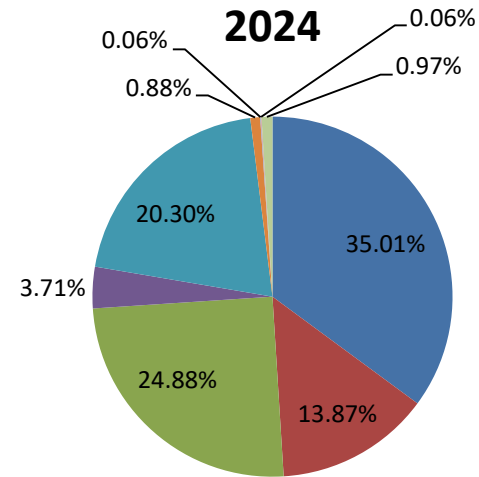


# • Overview of operations in Taiwan

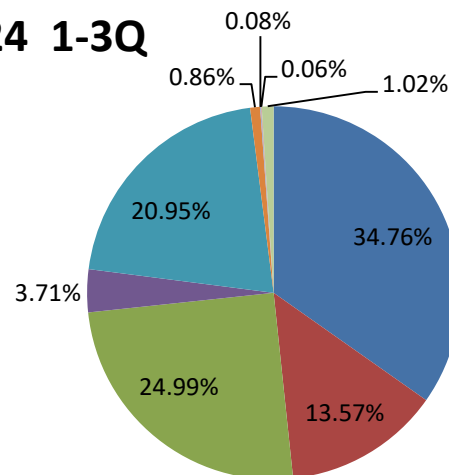
2023



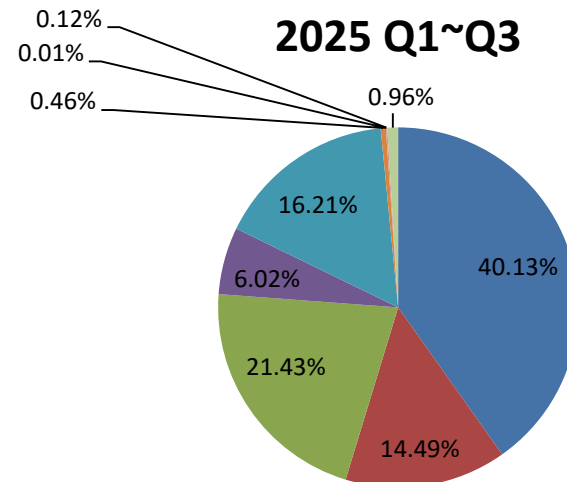
2024



2024 1-3Q



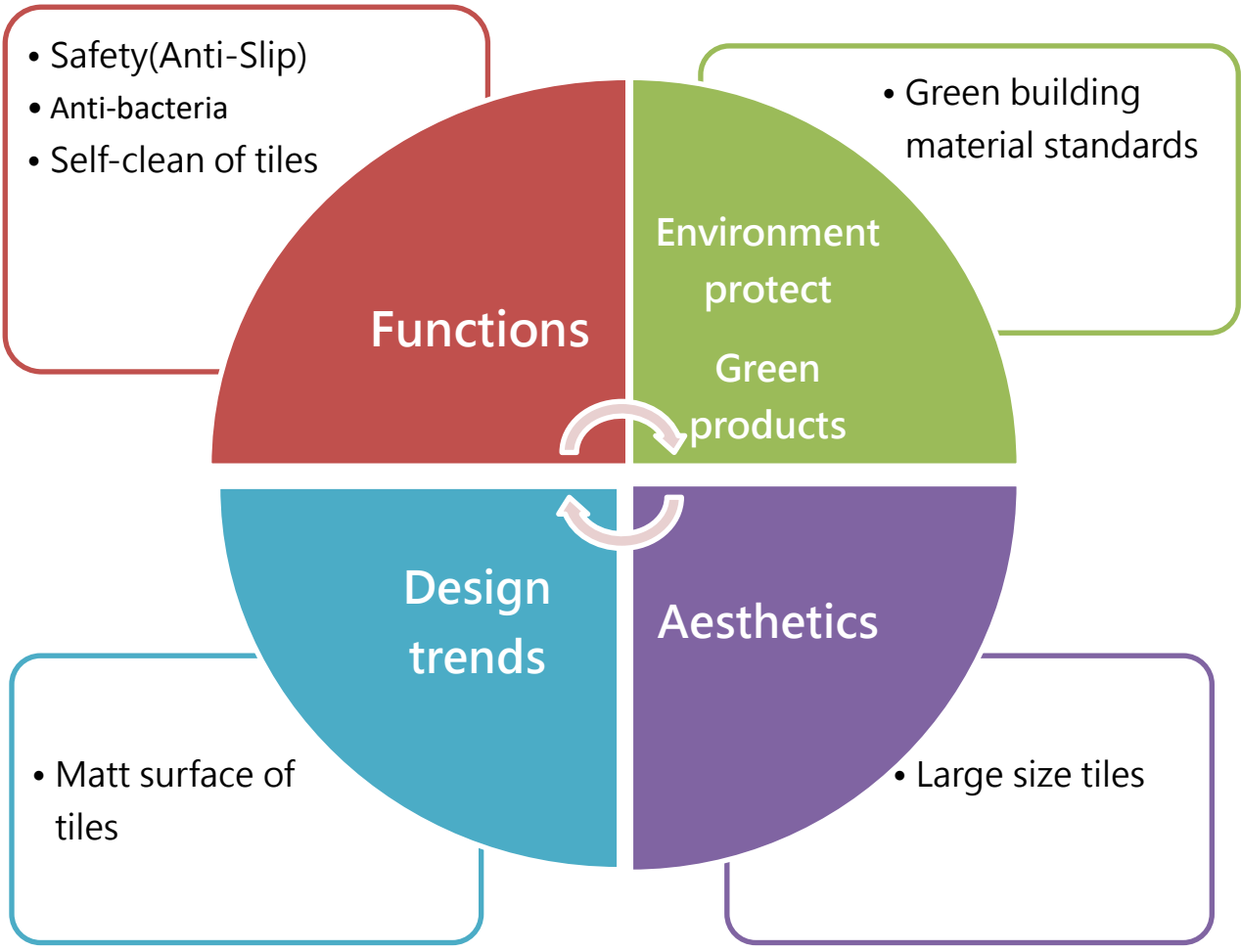
2025 Q1~Q3



- Glazed Porcelain Tile
- Marble Tile
- Polished Porcelain Tile
- Twenty mm Tile
- Building External Tile
- Traditional Floor Tile
- Wall Ceramic Tile
- Accessory Decorate Tiles
- Porcelain Tile

# •Market Overview

## Consumer demand trends in purchasing building materials

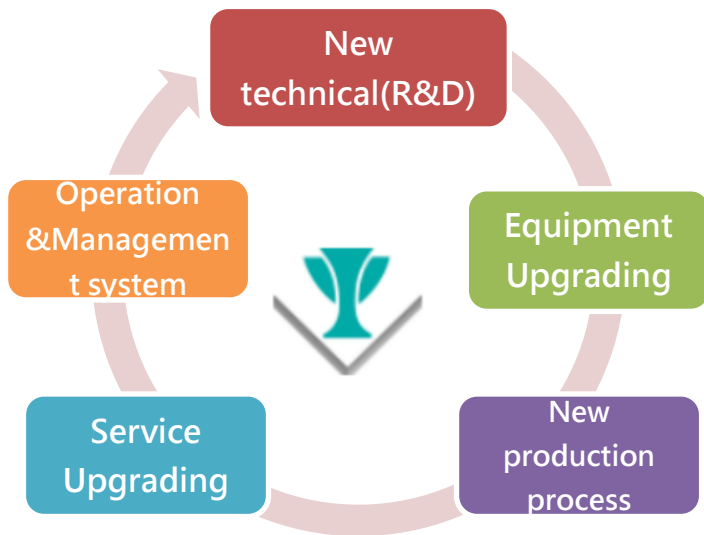


# •Our futures

## --Total Solution--

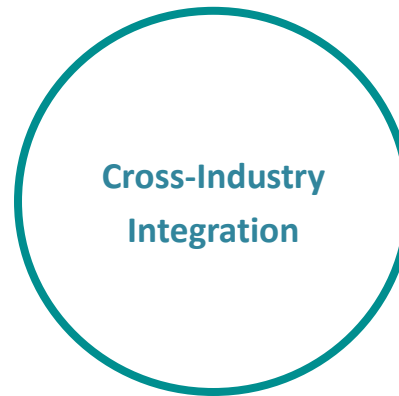
### The Best Surface Building Materials System Provider

“Champion”-Your Lifelong Choice Receiving Market Recognitions and Customer Praises in its 50+ Years of Operations. Champion conducts an overall upgrade emphasizing the five aspects of **Product R&D, Equipment Improvement, New Manufacturing Processes, Sales and Product Services, and Administration and Operation Systems**, whilst upholding the motto of “the Resolver of Façade Building Material Systems” to provide more diverse building materials for the mass as well as the integrative service of use, design and construction.



# • Operational Business Layout

--Total Solution--



# • Operational Business Layout

## Champion Sustainable Living

### **Green & Sustainable Solutions**

Recycled green building materials combined with energy-saving construction methods (façades and raised flooring systems), supporting both new developments and renovation projects to improve building energy efficiency.

### **Cross-Industry Integration**

Provide solutions such as self-leveling mortar and permanent sound insulation systems to address common residential issues.

### **Upgraded Surface Comfort**

Large-format tiles for compact spaces, enhanced by advanced surface technologies.  
**Natural Surface Upgrade** – CSR > 0.55 for indoor slip resistance, easy to clean, and comfortable touch.

**Skin Glazed** – Soft, low-glare finish to reduce reflection and eye strain.

**Digital Micro-Texture** – New 60 × 60 cm format with fine micro-pattern details.

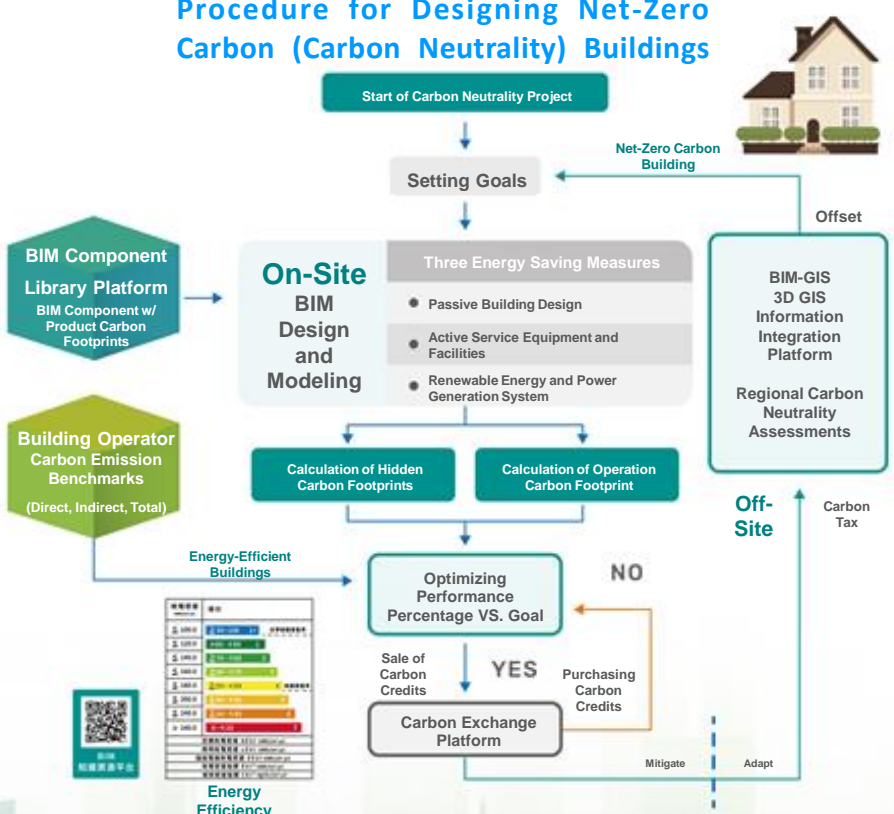
# Champion Building Material Engages ESG for the Sustainable and Aesthetic Buildings

- 1<sup>st</sup> Tile Manufacturer to prepare a ESG Sustainability Report
- 1<sup>st</sup> Tile Manufacturer to Complete Carbon Inventory
- 1<sup>st</sup> Tile Manufacturer to Complete the BIM Component Incorporating with Government Policies concerning Smart City
- 1<sup>st</sup> Provider in Cooperation with Large Construction Companies on Recycling of Waste Bricks and Tiles (Cradle to Cradle Project)
- 1<sup>st</sup> in Introducing the Facade Energy Efficiency System for the Peers, Facilitating the Attainment of the Near-Zero Construction Goal

## The Two Keys to Net-Zero Building =

Low Embodied-carbon Building Rating System (LEBR), Certification for Low-Carbon Buildings + Building Energy-Efficiency Rating System (BERS), Certification for Energy Efficiency of Buildings  
 Use building materials from Champion to reduce carbon emission throughout construction and contribute to constructing low-carbon buildings.

### Procedure for Designing Net-Zero Carbon (Carbon Neutrality) Buildings



國立聯合大學 建築學系 陳上元教授 授權使用

# • Champion ESG – Sustainable & Comfortable Living



## Government Recognition

Leading the industry in energy-saving and carbon-cutting practices

### Energy-Saving Construction Methods

- Thick-tile façades system
- Raised outdoor flooring system
- Same-level drainage system

### Green Building Surface Materials

- Supporting national policy initiatives
- BERS energy efficiency
- Renewable Green Building Material
- Outdoor façades & raised flooring systems

### Milestones

**2020:** Completed façades system demo area at headquarters

**2022:** Patent & structural certificate obtained

**2023:** Passed wind & rain tests; green building label received

**2024:** BERS energy efficiency & LEHR low-carbon certification

**2025:** Tech energy-saving stone adopted by listed developers

# • Business Operations



## Cross-Industry Integration

**Developed** cement-based self-leveling mortar -

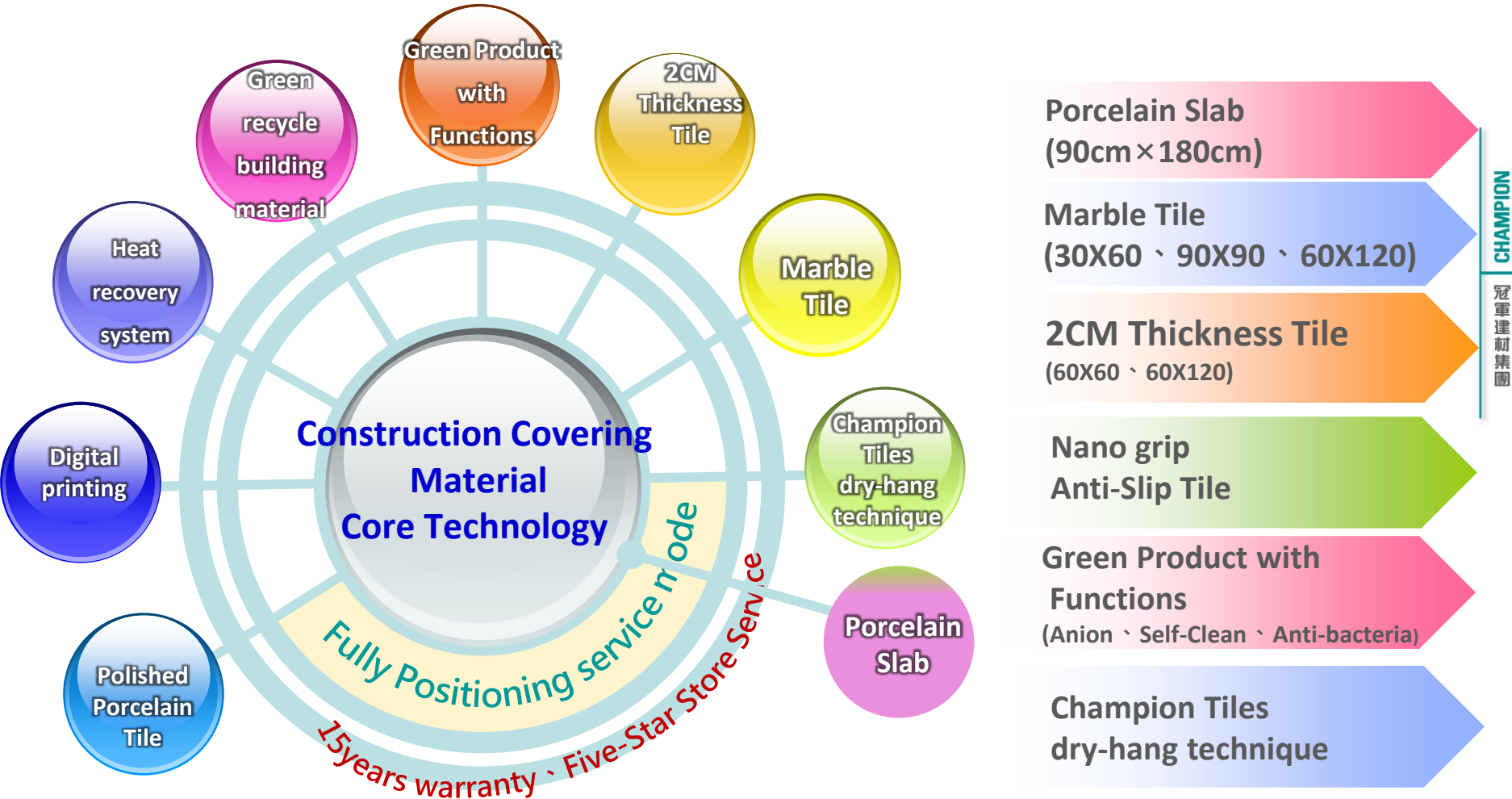
**Provides a new option for leveling or subflooring; combined with soundproof mats for permanent noise reduction.**

- 2 cm cement-based self-leveling mortar replaces traditional 4 cm tile mortar layer, increasing installation efficiency 3–5x.
- Shortens construction time; surface materials can be applied after 24 hrs, reducing labor cost and construction loan interest.
- Increases interior height while lowering embodied carbon and construction cost, supporting low-carbon buildings.
- Tested with Saint-Gobain soundproof mats at National Pingtung University acoustics lab: noise reduction 18 dBA, meeting building soundproofing regulations.

# • Diversification R&D upgrading

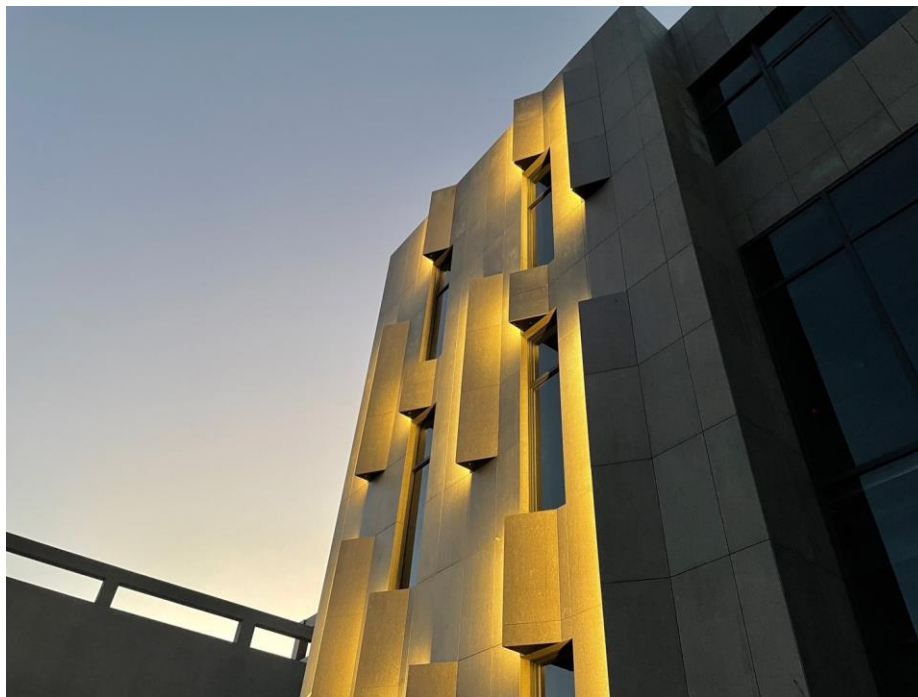
Based on core technical of architectural porcelain production in forming 、 sintering...etc 、 Combined new service model 、 actively promote diversified products

Champion invest new factory will follow industrial 5.0 standard 、 to production large slab and slate...etc for new type building material expanding diversify high-end products developing new market ◦



# • New Products

The new product “Technology and Energy Saving Tile(2cm)” features multi-specification, multi-molded surface and multi-field, launching a variety of 60X60, 90X90, 60X120 specification products with different molded surface design and classic high-grade stone texture, which is a perfect fusion of nature's original color and project design, and the price is about 30% to 50% of the stone, the construction is simple and efficient, and it is suitable for the wall, the floor, the walkway, and other various fields.



# • Business Operations

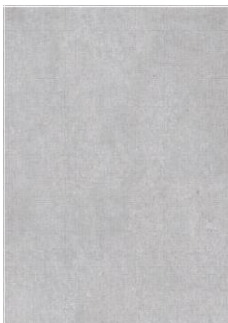
Upgraded Surface  
Comfort

## New Product – 60 × 60 Digital Micro-Texture

Upgraded Specifications & Versatile Use: New 60 × 60 format with digital micro-texture, suitable for walls and floors. Adds geometric, dot, or flow-aligned micro-patterns to traditional stone designs.

Digital Micro-Texture Technology: Combines digital inkjet printing with mold effects for precise, flexible surface variations. Enables positioning, orientation, and depth control, creating more dynamic surfaces than traditional molds.

- 1. Reduces light pollution & improves indoor comfort:** Mainly applied on matte or natural surfaces to achieve diffuse reflection, reducing glare.
- 2. Easy to clean & maintain:** Micro-pattern retains visual variation without roughness, making it user-friendly.
- 3. Enhanced visual effects under indirect lighting:** Additive/subtractive micro-texture produces subtle light and shadow changes, enhancing overall spatial aesthetics.



## ● Strengthen marketing strategy › Brand Stores new decorate with upgrading

To strengthen the Group's market share performance and enhance a seamless omnichannel consumer experience, the Group is committed to building and leveraging the vertical and horizontal synergies of its brands. Through ten major showrooms located in Taipei, Taichung, Kaohsiung, Pingtung, and other regions, the Group showcases the value proposition of its products. In addition, the Group promotes and provides guidance to full-renovation stores, upgrades in-store displays, and enhances operational efficiency through information-based applications. These efforts are complemented by close collaboration with craftsmen and designers, diversified in-store marketing activities, and the regular organization of experience-sharing sessions on successful sales practices for building material dealers, thereby continuously strengthening the overall competitiveness of the distribution network.



# • Guidelines for Implementing ESG Operations

## Environment

### -a Sustainable Environment

#### 1<sup>st</sup> in Taiwanese Tile Manufacturers in

- Completing ESG Sustainability Report and Carbon Inventory
- Completing the BIM Component Incorporating with Government Policies concerning Smart Cit
- Cooperating with Large Construction Companies on Recycling of Waste Bricks and Tiles
- Introducing the Facade Energy Efficiency System for the Peers, Facilitating the Attainment of the Near-Zero Construction Goal
- Obtaining the “Green Factory” certification with an additional 20% energy-saving compared with peers
- Obtaining the “Renewable Green Building Material” and “EU ecolabel” labels

## Social

### -Employee Care and Social Contributions

- Awarded the Golden Award under the Manufacturing Industry Category of 2023 Happy Enterprises

#### Employee Welfare

- Free-of-charge dormitory for employees serving specific roles and from other cities
- Annual company trips and extra travel allowance contingent with company profiting status
- Full-time employees with 2+ years of service are entitled physical examination at Company expense, with additional examinations including cancer screening, eye care, bone mass examination, etc.
- Advocating the “Retired Employee Re-hiring Program”

## Governance

### -Corporate Governance

#### Reinforcing Competence of the Board

- 7 directors (incl. 4 independent directors) meeting election criteria are elected at a compliant manner
- Board meetings convened according to applicable rules

#### Maintaining the Rights and Benefits of Shareholders

- An external website exclusively for investors is developed
- Spokesperson(s) and Acting Spokesperson(s) have been assigned

#### Disclosure of Corporate Governance Information

- The Company governance information, including the operations of the Board and functional committees along with relevant regulations of importance have been disclosed on Company website.

# • Guidelines for Implementing ESG Operations

## Building a Sustainable Supply Chain

- ✓ Providing norms for Supplier management procedures through the “Procurement Management Procedure”.
- ✓ Understanding and controlling the Supplier aspects including labor rights, environmental protection, ethics and norms, control over safety and health risks, etc. to reduce the operating risks and costs of the Company and the suppliers in the joint efforts toward the future with a composed and sustainable growth.
- ✓ Suppliers are required to sign and reply the “Supplier Commitment for Integrity”.



## Introducing the ISO 14001 Environmental Management System

- ✓ Engaging 3rd-party verification agencies for examination of documents and operating procedures.
- ✓ Lowered impacts on air quality required in the transportation vehicles and packaging methods in the material feeds.

## Establishing a “GHG Inventory Promotion Committee”

- ✓ Proposing annual management goals for environmental management aspects including carbon reduction, waste reduction, wastewater discharge, etc.
- ✓ Carbon reduction by 1% each year in the preliminary period, with continued attention to the development and supply of clean energy as well as innovations to kiln equipment and energy technologies. Achieving Net-Zero Emission in 2050 is expected.

## Conduct regular annual greenhouse gas inventories

- ✓ Inventory process in compliance with ISDO 14064-1.

## Planning of Future Sustainable Development Strategies

- ✓ Proposed to the Board for review at Q4 each year.



**冠軍建材**

穩健 · 超越 · 精緻 · 共享